

nPoint Installation Requirements

nPoint agent is a software developed by Nipendo which provides a solution for transporting messages inbound and outbound between your system to Nipendo system.

nPoint installation is performed in your server and using a secure SSL protocol (443).

It enables secured and encrypted transfer of messages between your ERP system to Nipendo servers.

Nipendo has an SSL encryption certificate issued by GeoTrust and recognized as part of Microsoft software updates.

Each company is uniquely defined in Nipendo only if there is a preliminary configuration performed by Nipendo on Nipendo servers.

These settings ensure a clear identification and authentication of the source pointing to Nipendo servers without the possibility of external tracking or monitoring.

In addition, Nipendo has additional F5 Firewall Application protection.

This protection allows you to block an attempt or an attack at the HTTP/HTTPS protocol level along with the optimization, learning, stability, and survivability capabilities of applications running in Nipendo.

To maintain this on your server where the installation is performed, access to the following addresses is required:

Test:

<https://testenv.nipendo.com/B2BService/BService.svc>

- IP address: 194.90.44.33
- port 443

Prod:

<https://b2b.nipendo.com/B2BService/BService.svc>

- IP address: 194.90.44.35
- port 443

[The installation file](#) is a MSI type and defines a service on the server that listens to a directory (or directories depending on the configuration - see screenshot below).

As soon as there is a file in the directory of the expected type (for example: XML), the file is transmitted in a secure and encrypted protocol to the Nipendo servers.

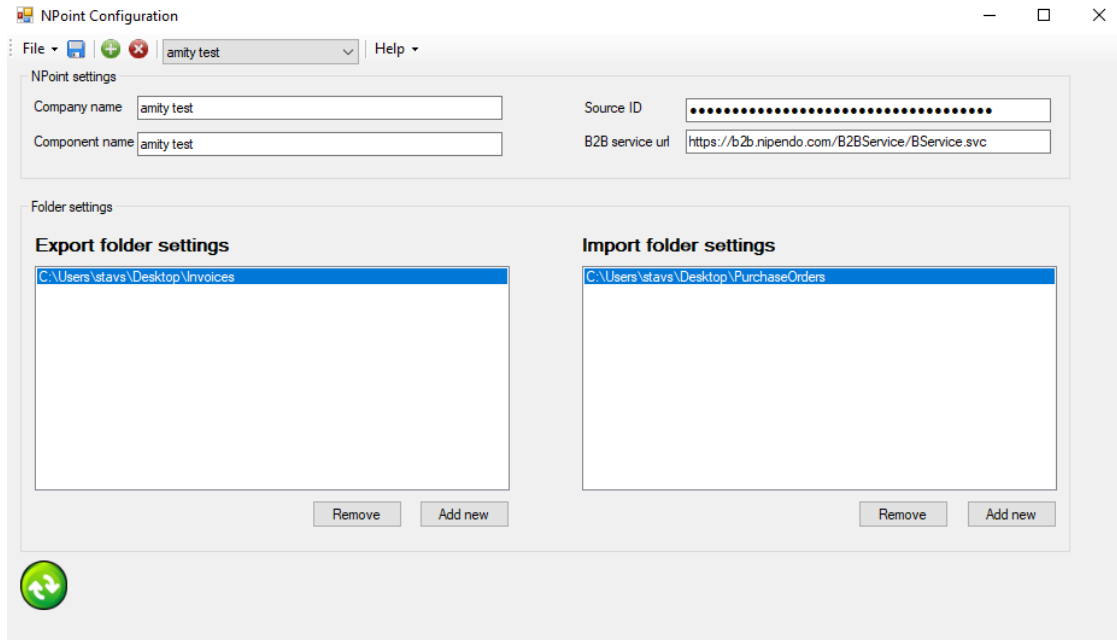
On Nipendo side, additional tests are performed to identify both at the infrastructure level as specified (F5) and at the application level.

App screens

The nPoint has a console for configuration settings and controls.

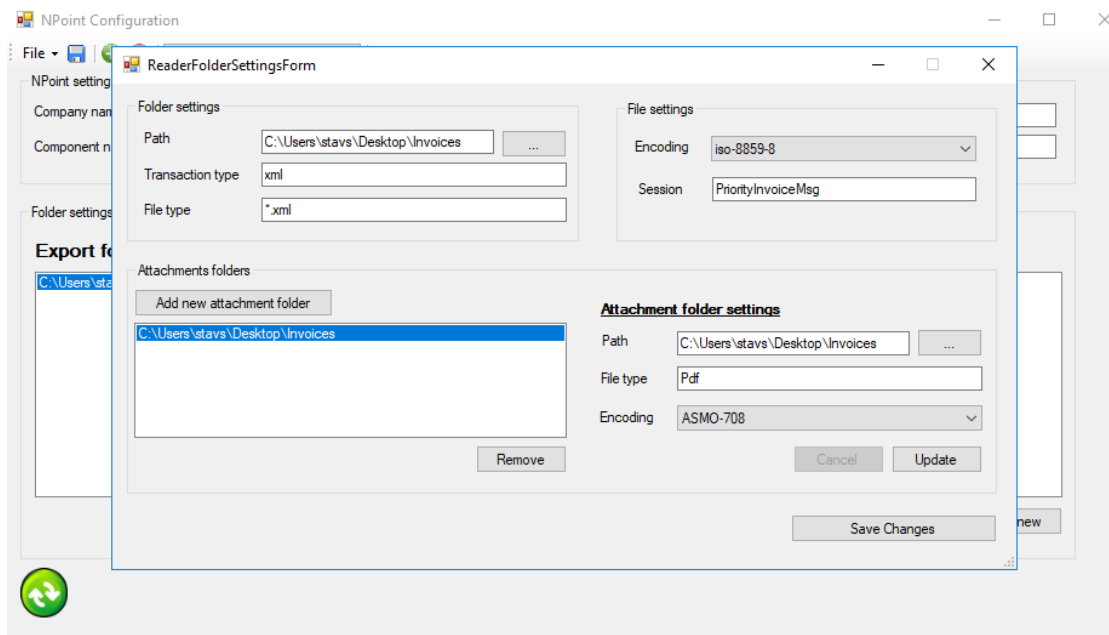
The settings are also configured in Nipendo servers to provide protection and security.

You can set up a message transmission to Nipendo and from Nipendo.



The settings include:

- The directory on the server
- File type
- Message type
- Additional attachments (some files require an accompanying PDF)



Minimum Server Requirements:

- Windows 2016 and above
- An updated package installed for the operating system
- .NET Framework version 4.8
- Support for TLS 1.2
- CPU X 2
- 8 GB RAM
- Disk: C 60 GB + Disk D: 5 GB
- Static IP address
- Internet access in Protocol 443 without Proxy or FW blocking to the following addresses:

Test - <https://testenv.nipendo.com/B2BService/BService.svc>

IP address: 194.90.44.33

Port: 443

Prod - <https://b2b.nipendo.com/B2BService/BService.svc>

IP address: 194.90.44.35

Port: 443

Minimum Requirements:

- Access to a local library in which the messages are extracted from the ERP system.
- User with permissions (R\W) to the service - the user is assigned on your side only, without the need to transfer the password to us.
- Remote access to the server by VPN/RDP for installation and maintenance if necessary.
- Availability of an IT person to respond as needed during the installation.
- At the end of the installation, your availability for testing.
- Assignment of a dedicated server for each environment is required: test and production (a total of two servers).
- Link for [nPoint installation](#).